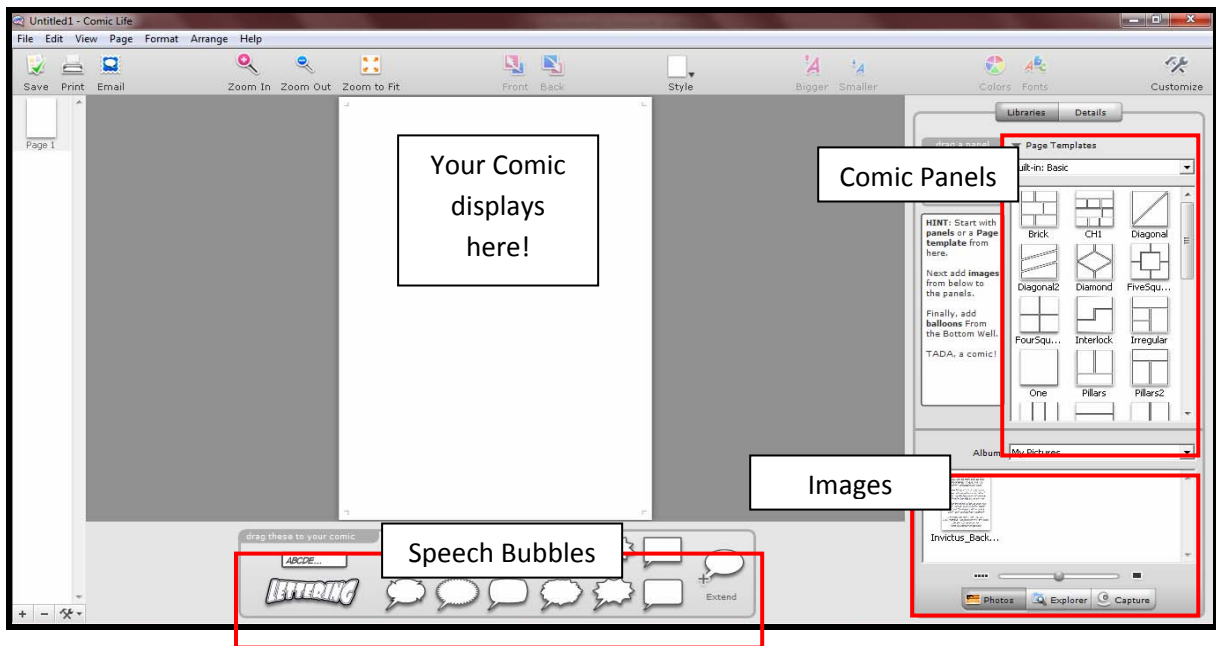
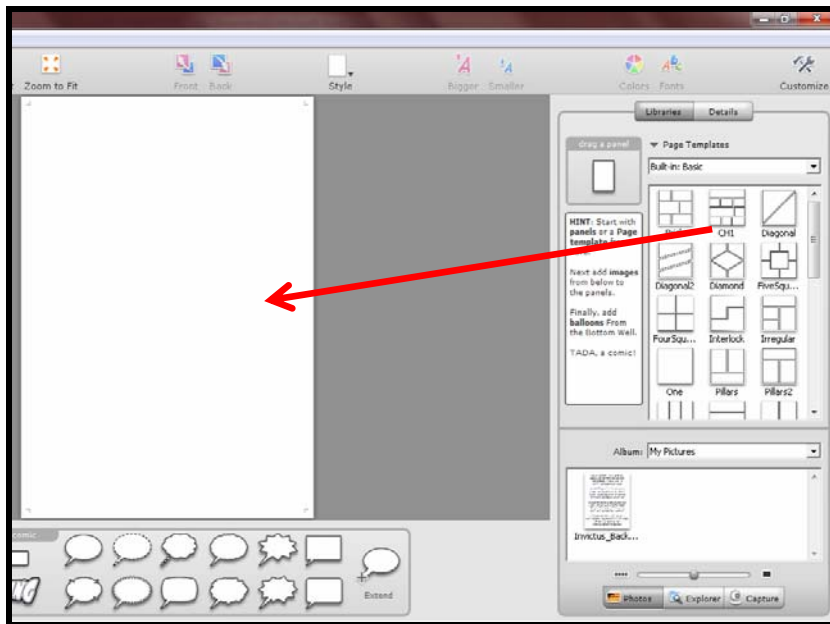


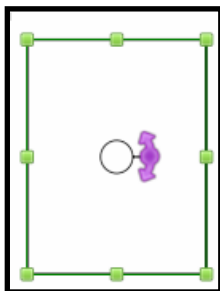
Comic Life – a quick how to guide



Choose a panel and drag it in

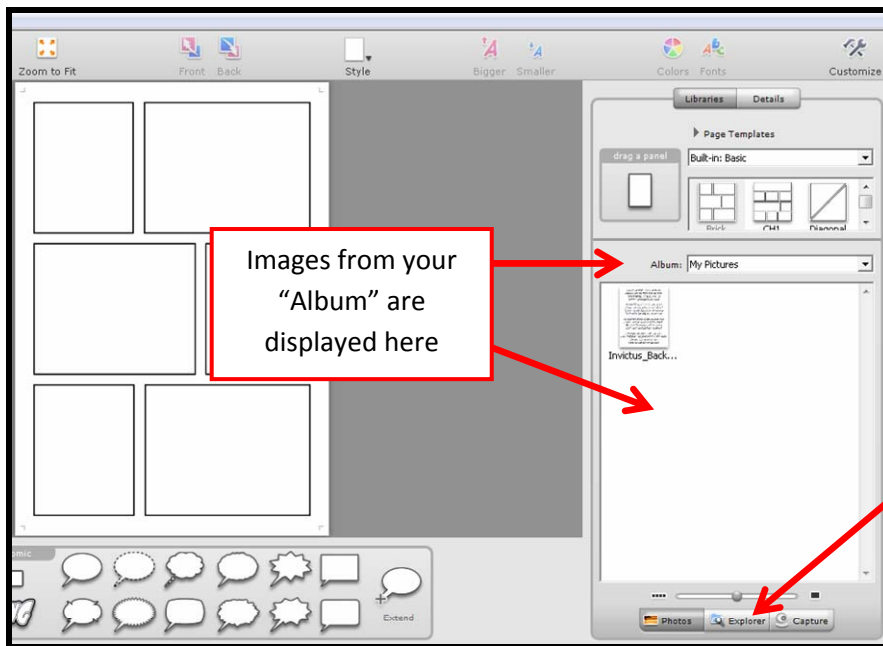


Choose a panel layout for your comic by clicking on it and **dragging** it to your page



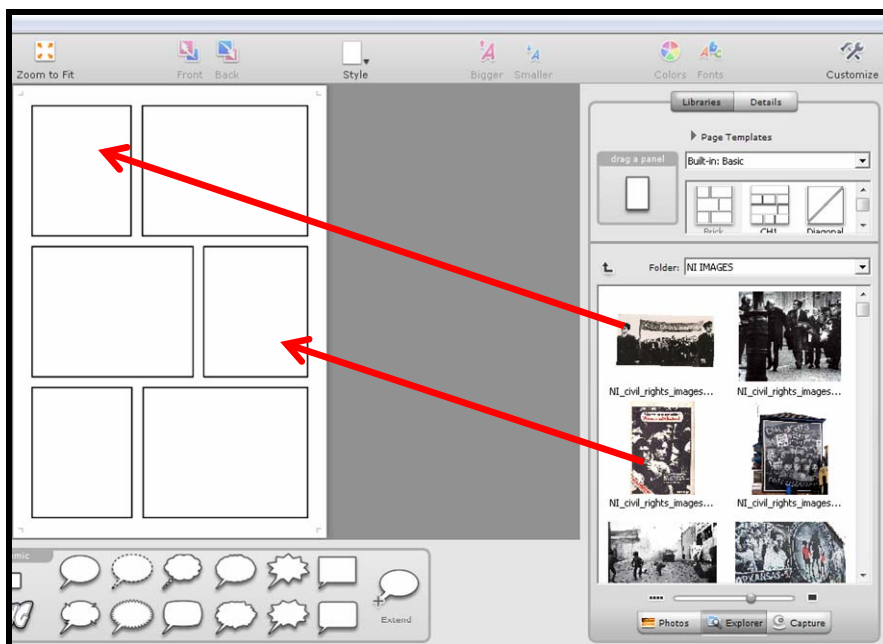
ATTENTION!!
 Panels can be resized, rotated, moved or deleted to suit your comic – just click on them once and edit them the way you want!
 - Drag the green squares to resize
 - Drag the purple arrows to rotate

Choose images for your Comic

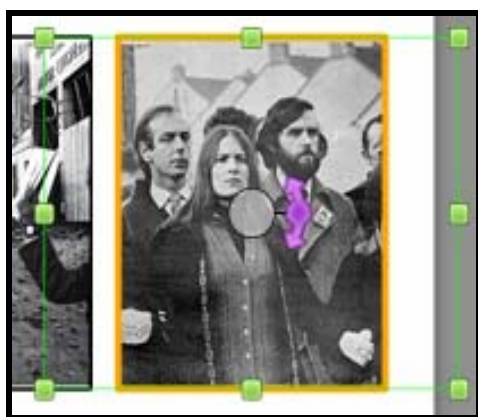


Images from your "Album" are displayed here

Comic Life will automatically look for images from your "My Pictures" folder. To choose images from a different location, click on the "Explorer" button



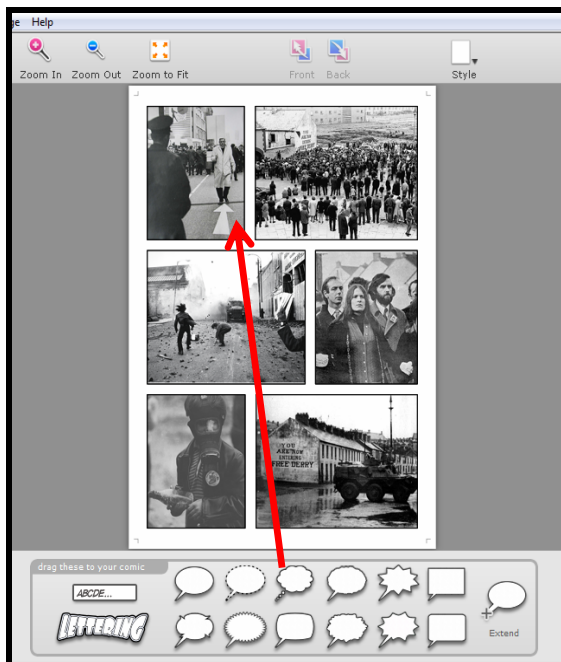
Drag images to the panels in your Comic



ATTENTION!!
Images can be resized, rotated, moved or deleted to suit your comic – just double click on them and edit them the way you want!
(You will know you have selected the image and not the panel because of the orange border)

- Drag the green squares to resize
- Drag the purple arrows to rotate

Adding Lettering, Captions and Speech Bubbles



Choose lettering, captions and speech bubbles for your Comic by clicking on them and **dragging** them onto your Comic



Lettering can be used for titles

Captions can be used for narration

Speech/Thought Bubbles can be used to show what a character is thinking/feeling

ATTENTION!!

Lettering and Captions can be resized, rotated and moved. Click on them once to activate these features (much like images and panels).

Lettering can also be stretched – hover over your lettering to activate the blue stretching circles



ATTENTION!!

Hovering over a speech/thought bubble will allow you to move it (**green cross**), add another arm (**orange plus sign**) and change the direction of the speech arm (**blue circle**). Clicking on the speech/thought bubble will also allow you to resize it

Changing the Style



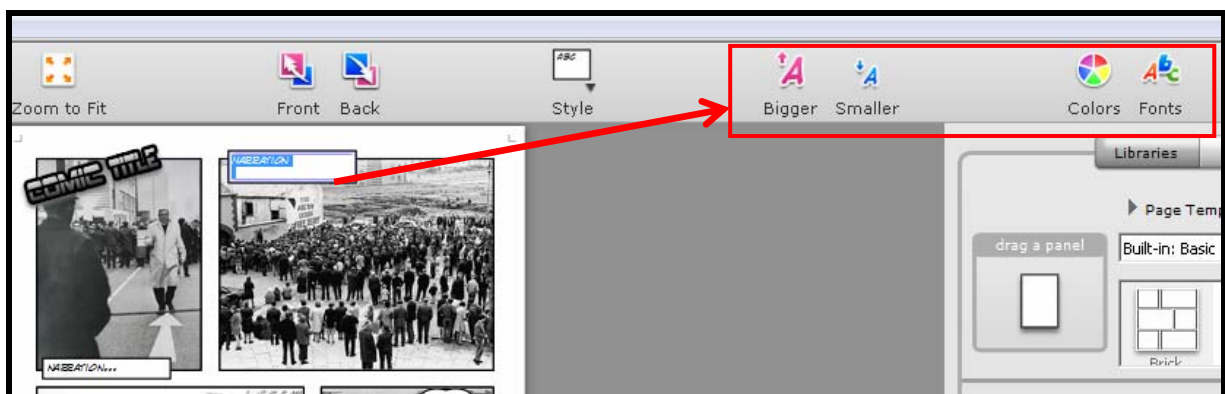
To change the **Style** of a panel, title, caption, image or speech/thought bubble click on the item and then click the “Style” button on the toolbar

Each individual item has its own set of styles



ATTENTION!!
To change the style of an **image** you must double click on the **panel** the image is in. The same rule applies to **text** and **speech bubbles/captions**

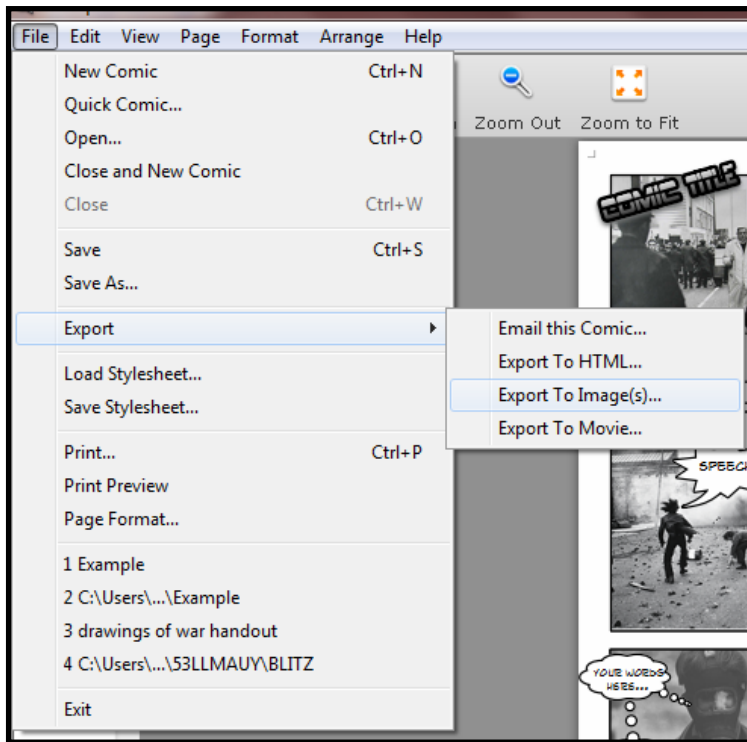
Changing the Font Style



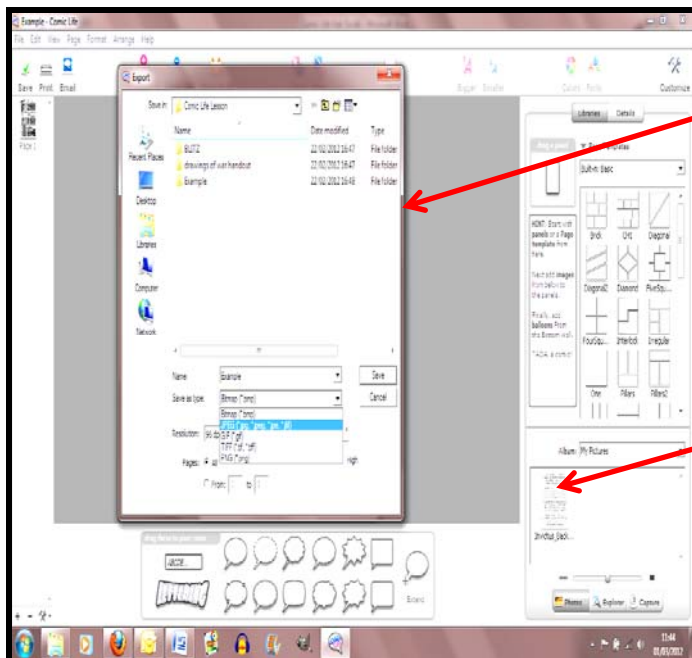
Double clicking on a caption or speech/thought bubble will activate the “Bigger”, “Smaller”, “Colors” and “Fonts” buttons on the toolbar. These buttons will only affect the font within the caption or bubble.

Saving and Exporting

Saving your comic will result in it being saved as a “.comicdoc” file. This is fine if your comic is still a work in progress. If your comic is finished, you may want to save it as a JPEG, BMP or GIF. To do this, you must **Export** your comic.



Click on **File >> Export >> Export To Image(s)**

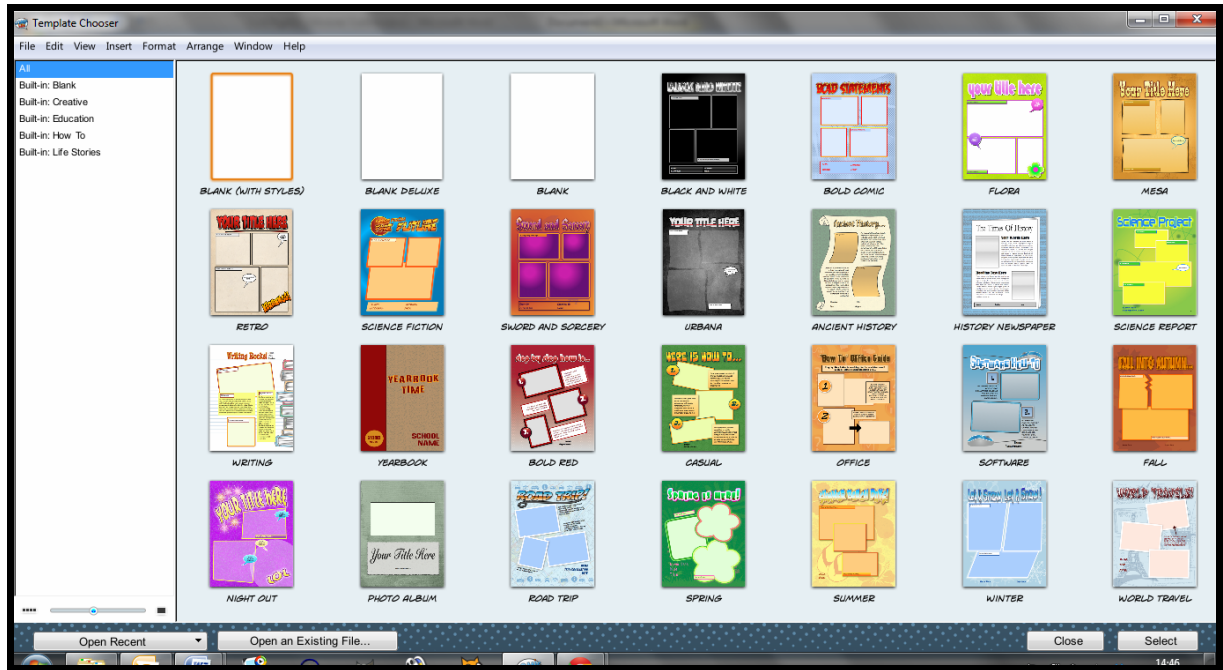


You must then choose a location for your exported comic

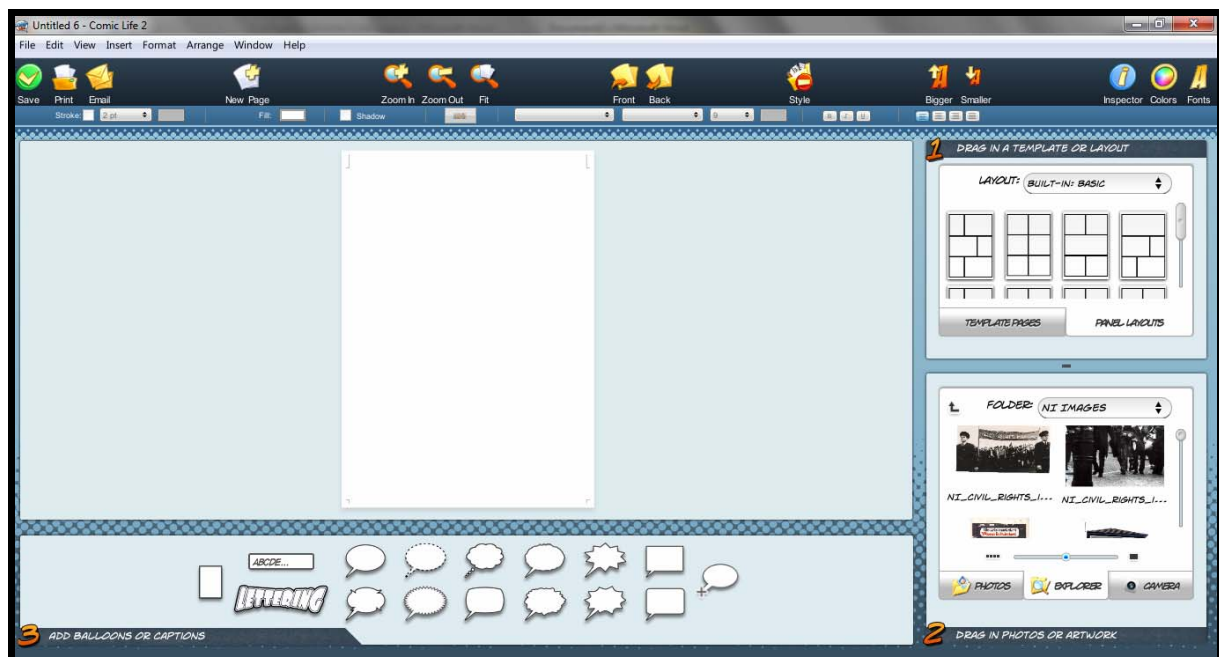
Clicking on this dropdown box will allow you to choose which file type you export your comic as e.g. JPEG

For more information on Comic Life and its benefits in education visit <http://plasq.com/education/>

Comic Life 2 Help Guide



When Comic Life 2 opens, you can choose from a number of built in styles and templates e.g. Creative, Education, How To, etc...



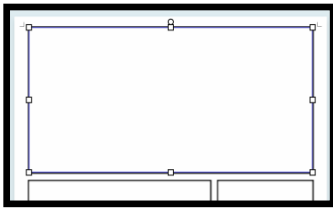
Choosing a “Blank” template allows you to create a comic from scratch.

Along the top of the Comic Life layout are the **Menu** bar and the **Tool** bar. The other sections of Comic Life are numbered (1-3). These are:

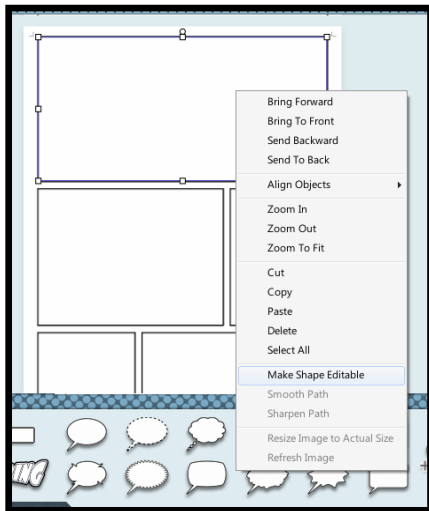
1. Drag in a template or layout
2. Drag in photos or artwork
3. Add balloons or captions

These are the 3 basic steps needed to create a comic.

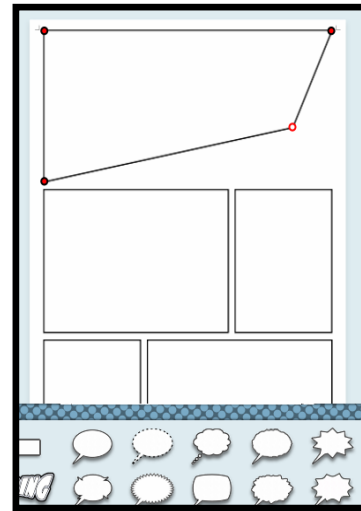
Editing Panels, Captions and Bubbles



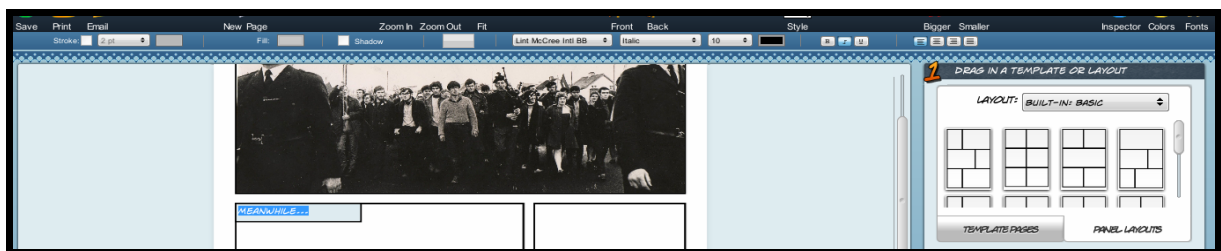
In order to resize a panel/caption/bubble, click on it once and click and drag on one of the small boxes at the edge of the outline box. To rotate panels/captions/bubbles, click on them once and hover over the loop at the top-centre of the outline box – when the icon changes to an arched arrow, click and drag from side to side.



To **edit the shape of a panel**, click on it once and select “Make Shape Edible”. Click and drag one of the four red circles to edit the shape.



Double click on any panel/caption/bubble to edit the information **INSIDE**. With captions and bubbles double click to edit the font – change the font style, size, colour, alignment, etc.. – and rewrite your text. **Note: the writing inside the caption/bubble will be highlighted.**



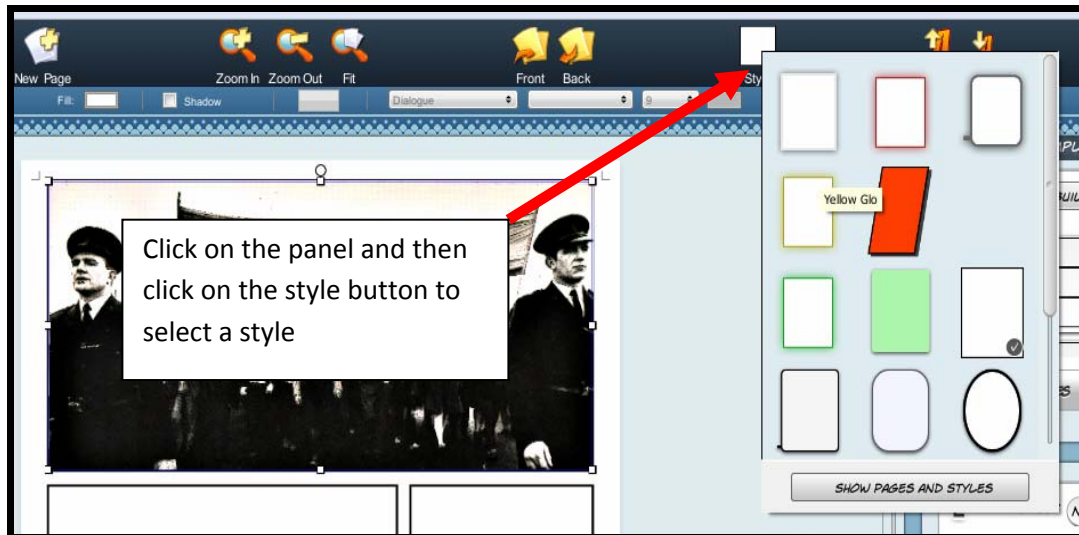
Double clicking on a panel will allow you to edit the image inside that panel – move, resize and rotate. **Note: the panel will be highlighted by an orange line and the image will be outlined by a thin blue line.**



Adding Styles

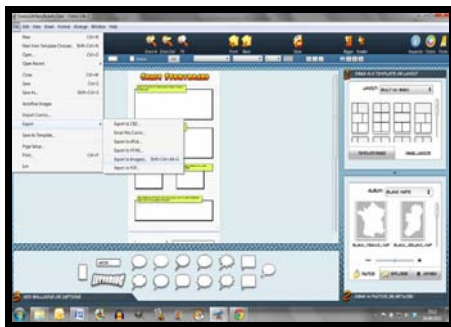
Styles can be added to pages, titles, panels, captions, bubbles and images.

Click on the element you want to change the style of once and then click on the “Style” button on the toolbar at the top of the program. **Note: Click once for a panel, twice for the image inside the panel.**



Exporting

When you have finished creating your comic, it must be exported. Exporting your comic allows it to be viewed as an image. To do this click **File >> Export >> Export to Image(s)**.



Remember!!

- Comic Life can be downloaded from www.plasq.com
- *Click once* to select a panel, caption, bubble and *double click* on these elements to edit the content i.e. text or image
- Be consistent with your choice of styles i.e. apply the same style to all elements
- Try to match images with panels i.e. landscape images to landscape panels
- Saving your comic will allow you to edit and view it in Comic Life, but when your comic is finished it **MUST** be **EXPORTED** for it to be viewed as an image
- The **View** option in the menu bar allows you to hide/show other elements of the Comic Life layout such as Pages and Styles



- Shapes can be inserted into comics by selecting **Insert >> Shape** from the menu bar
- Caption boxes and speech bubbles can be formatted using the formatting tools below the toolbar
- The “Inspector” button on the toolbar offers the user the opportunity to view and edit some advanced settings of Comic Life such as page size and image adjustment